



SOPHOS ANTIVIRUS HOME DOWNLOAD INSTALLATION

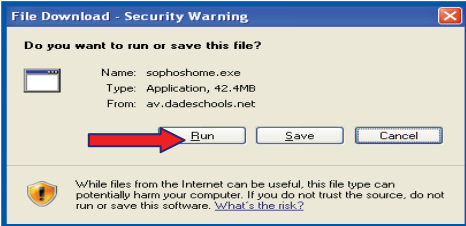


The **Sophos** icon will be displayed on your desktop.



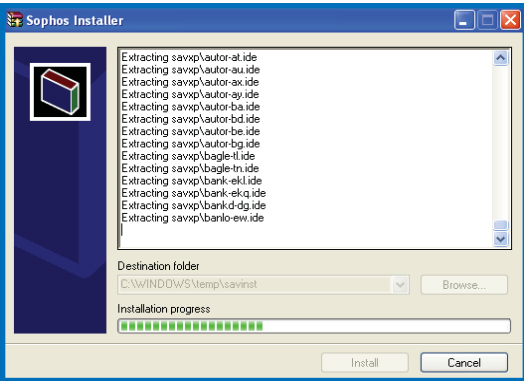
Double-Click on the **Sophos** icon

On the **Open File-Security Warning** screen,

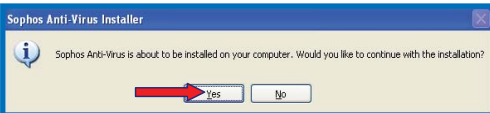


Click Run

The **Sophos Antivirus** software installation will begin.

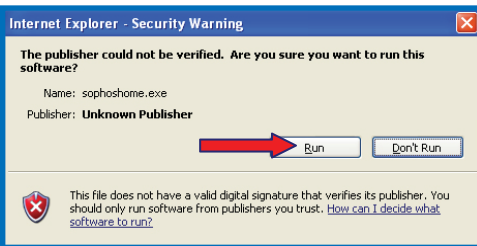


The **Sophos Anti-Virus Installer** screen will be displayed.



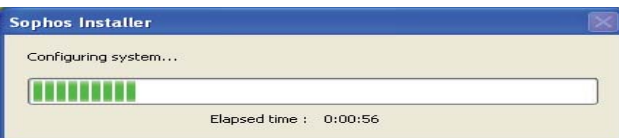
Click Yes

The **Internet Explorer-Security Warning** screen will be displayed.

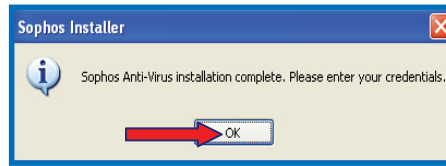


Click Run

The **Sophos Installer** will begin.

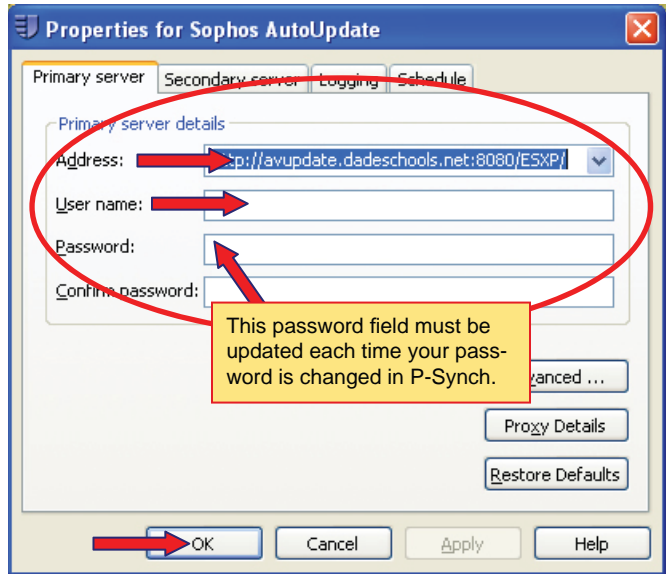


On the **Sophos Installer** completion screen,



Click OK

The **Properties for Sophos AutoUpdate** screen will be displayed.



This password field must be updated each time your password is changed in P-Synch.

Verify the **Address** field:

<http://avupdate.dadeschools.net:8080/esxp>

In the **User Name** field,

Type **Domain name** and your **Employee number**
(ex. Dadeschools\000000)

In the **Password** field,

Type your Dadeschools Password

In the **Confirm Password** field,

Re-Type your Dadeschools Password

Click OK

The desktop will be displayed. A blue shield will appear at the bottom of the desktop.

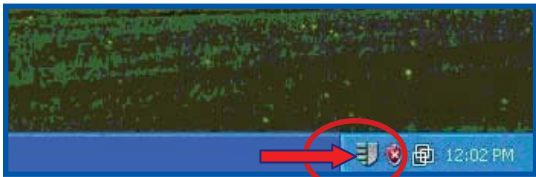
NOTE: THE PASSWORD FIELD MUST BE UPDATED EACH TIME YOUR PASSWORD IS CHANGED IN P-SYNCH.



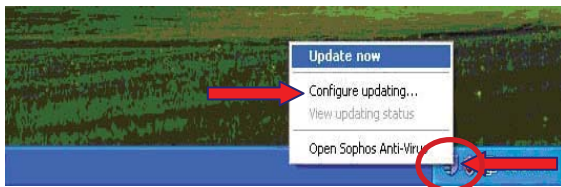
Updating Your Password

Each time your password is changed in P-Synch, the password field must be updated on the **Properties for Sophos AutoUpdate** screen.

At the bottom of your desktop,
Right-Click on the blue shield

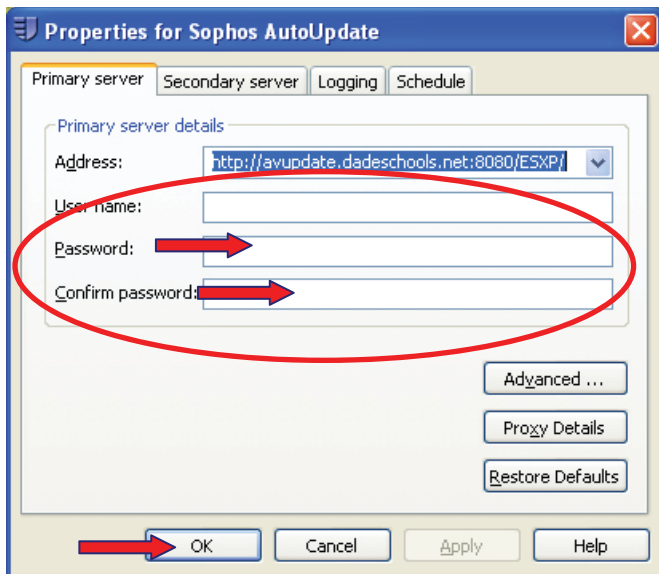


On the pop-up menu,



Click **Configure updating**

The **Properties for Sophos AutoUpdate** screen will be displayed.



In the **Password** field,
Type your Dadeschools Password

In the **Confirm Password** field,
Re-Type your Dadeschools Password

Click **OK**

The desktop will be displayed.

Whom to Call for Assistance

For questions or comments, please complete a **Self Service** incident at:
<http://selfservice.dadeschools.net>